

Early Learning Childcare Funded Offers



9 months to 3 years

Take Off into childcare

15 hours term time
570 hours from September 2024


30 hours offer term time
1140 hours from September 2025

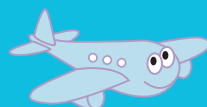
Targeted at working parents – parents must each expect to be earning at least £2,167 over the next 3 months and no one parent earning more than £100,000

Important

- Parents will hold an 11-digit code that they must revalidate every 3 months.
- Codes must have a start date on or before:
31 March to start in Summer term - April
31 August to start in Autumn term - September
31 December to start in Spring term - January

Apply via a government gateway account

 [gov.uk/apply-free-childcare-if-youre-working](https://www.gov.uk/apply-free-childcare-if-youre-working)
Helpline: 0300 1234 097



2 to 3 years

Flying Start childcare

570 hours until the term after your child turns 3


Must be 2 years old by the:

- 31 March to start in Summer term - April
- 31 August to start in Autumn term - September
- 31 December to start in Spring term - January

Targeted at parents who:

- Meet an economic criteria and receive government benefits
- Have no recourse to public funds
- Child receives DLA / has an EHCP
- Child is LAC or has been adopted

Apply via Families Information Service

 [derby.gov.uk/childcare](https://www.derby.gov.uk/childcare)
E: fis@derby.gov.uk
T: 01332 640758



3 to 4 years

All Aboard childcare

15 hours term time, 570 hours universal offer

Must be 3 years old by the:

- 31 March to start in Summer term - April
 - 31 August to start in Autumn term - September
 - 31 December to start in Spring term - January
- 15 hours:** Eligibility criteria is D.O.B. only, no code necessary


Extended Entitlement

30 hours term time, 1140 hours

30 hours: Targeted at working parents – parents must each expect to be earning at least £2,167 over the next 3 months and no one parent earning more than £100,000

Important

- Parents will hold an 11-digit code that they must revalidate every 3 months.
- Codes must have a start date on or before:
31 March to start in Summer term - April
31 August to start in Autumn term - September
31 December to start in Spring term - January

 Apply via [childcarechoices.gov.uk/](https://www.childcarechoices.gov.uk/)
Helpline: 0300 1234 097